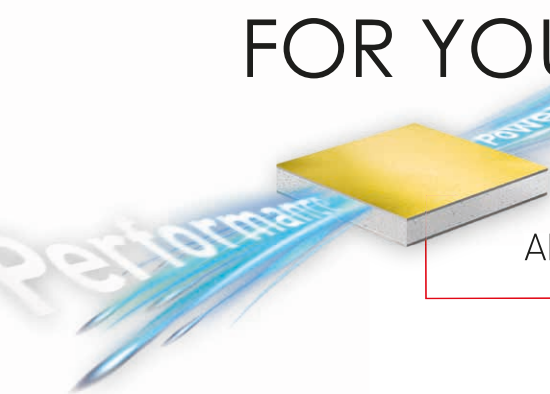




**Stock items** · Immediately available · Top conditions · **Stock items** · Immediately available · Top conditions

## EXPRESS-SERVICE FOR YOUR FAÇADE PROJECT



ALPOLIC™ composite panels **in stock**





#### Minimum order quantity:

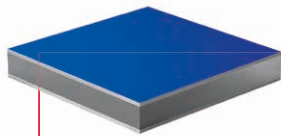
1 pallet of 25 panels  
(approx. 154 m<sup>2</sup> for  
ALPOLIC™/fr, 150 m<sup>2</sup> for  
A2 and 114 m<sup>2</sup> for NC/A1).

#### Express-Service:

COMPOSITE PANELS IN SELECTED FORMATS  
AVAILABLE FOR IMMEDIATE DELIVERY

**ALPOLIC™ is now offering a special service: Our high-quality composite panels are now available immediately from stock in selected formats and colours.** This means that you can access our products quickly and flexibly when you need them - without long delivery times or the need to build up your own stocks. Benefit from maximum flexibility and react immediately to short-term projects or unexpected requirements. With ALPOLIC™ you save time, space and ensure constant availability of first-class materials.

#### ALPOLIC™/fr



Panel format:  
1,535 x 4,010 mm  
(1,485 x 4,350 mm  
for Reflective Natural)  
Thickness: 4 mm



Traffic White  
MA9101-G30 (+/- RAL 9016)



Pure White  
MA9100-G30 (+/- RAL 9010)



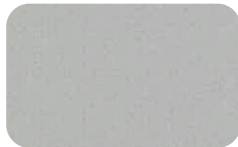
Anthracite Gray  
MA7105-G30 (+/- RAL 7016)



Bronze Metallic  
MD9504-G30



Smoke Silver  
MD9501-G30 (+/- RAL 9007)



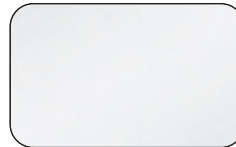
Anodic Silver  
MD9500-G30 (+/- RAL 9006)



Natural Brushed  
ML2314-G60

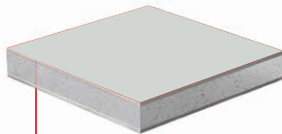


Anodized Look C32  
ME0C32-G15



Reflective Natural  
DE-AR0101

#### ALPOLIC™ A2

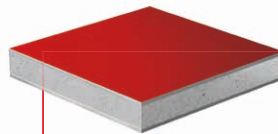


Panel format:  
1,500 x 4,010 mm  
Thickness: 4 mm



Pure White  
MA9100-G30 (+/- RAL 9010)

#### ALPOLIC™ NC/A1



Panel format:  
1,500 x 3,050 mm  
Thickness: 4 mm



Pure White  
MA9100-G30 (+/- RAL 9010)



Anthracite Gray  
MA7105-G30 (+/- RAL 7016)

**Request  
your  
personalised  
offer!**



#### ALPOLIC™ – the world's first address for aluminium composite panels

Our materials are almost 100 % recyclable. Even waste from ALPOLIC™ plants is collected and recycled.



Certifications



Trademark of AGC Chemicals,  
Asahi Glass Co., Ltd.

ALPOLIC™ | MITSUBISHI POLYESTER FILM GmbH

Kasteler Straße 45/E512 | 65203 Wiesbaden, Deutschland

phone: +49 611 962-3482 | fax: +49 611 962-9059 | info-alpolic@mcgc.com | www.alpolic.eu/en

