

# ALPOLIC™

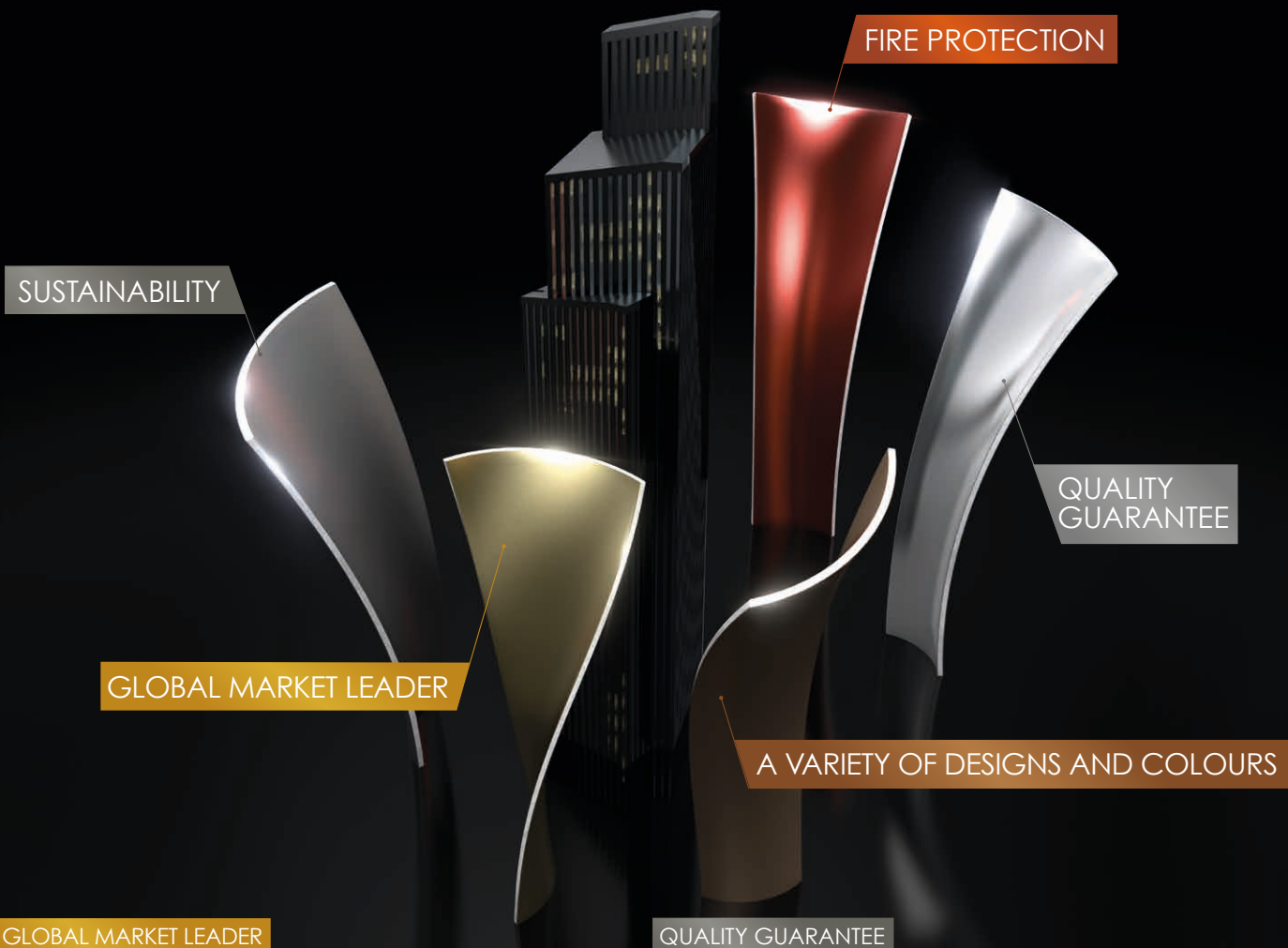


## FAÇADE DESIGN WITHOUT LIMITS

PRODUCT OVERVIEW

# BE.SAFE.

## WITH 5-FOLD SAFETY IN FAÇADE CONSTRUCTION



### GLOBAL MARKET LEADER

ALPOLIC™ represents 47 years of know-how and experience in the development and manufacture of aluminium composite panels. As a global market leader, our name stands for the safety of innovative, high-quality products and for perfect service.

### FIRE PROTECTION

When it comes to maximum fire safety, ALPOLIC™ allows nothing to get burned. We have already proved this in countless international tests. It is no wonder that our certified ALPOLIC™ A2 aluminium composite panels continue to set new standards with respect to fire safety – even up to 2m width!

### A VARIETY OF DESIGNS AND COLOURS

ALPOLIC™ offers architects and fabricators the reliability of the greatest variety of designs and colours on the market. Whether trend colours, surface designs or genuine metals – our portfolio allows an unlimited creative freedom.

### QUALITY GUARANTEE

Without doubt, ALPOLIC™ is always the first choice as far as protecting the façade from atmospheric influences, corrosion and scratches is concerned. And this will also be written down for you in black and white. With a quality guarantee of up to 20 years.

### SUSTAINABILITY

On the basis of our unique KAITEKI philosophy we make our contribution daily for a safe and sustainable future. This means, for example, that all the materials we use are 100% recyclable.

For more information please contact us or visit [www.alpolic.eu](http://www.alpolic.eu).



# ALPOLIC™

## ONE OF THE WORLD'S LEADING MANUFACTURERS OF ALUMINIUM COMPOSITE PANELS FOR ARCHITECTURE.

ALPOLIC™ FEATURES 4

ALPOLIC™ A2 8

ALPOLIC™/fr 9

ALPOLIC™/fr TCM 10

ALPOLIC™/fr SCM 11

ALPOLIC™/fr CCM 12

ALPOLIC™/fr ZCM 13

ALPOLIC™ REFERENCES 14

ALPOLIC™ is a brand of Mitsubishi Chemical. As a global market leader with over 47 years of experience in the development and manufacture of aluminium composite panels for sophisticated building architecture, we stand for the safety of innovative, high-quality products and perfect service.

BE.SAFE. is the claim that ALPOLIC™ proves not only as a product, but holistically as a corporate philosophy. This is backed by tangible arguments for more inspiration, quality and safety for the rear-ventilated building façade – from fire protection to sustainability. Architects and fabricators worldwide rely on our quality products for the implementation of unique architectural projects – both in existing and new buildings.



# PRODUCT FEATURES

The unique product features make ALPOLIC™ aluminium composite panels an ideal material for the sophisticated design of rear-ventilated façades – both in existing and new buildings as well as for interior applications. They not only impress with their brilliant colours, but also with their extreme durability and high quality. This is due to the unique LUMIFLON™ surface coating based on a transparent fluoropolymer resin (FEVE). It is resistant to dirt and reliably protects against weathering, UV radiation, corrosion, oxidation and scratches. The standard coating is guaranteed for up to 20 years.



Excellent flatness



Extremely light weight



ALPOLIC™ A2 with mineral filled core is non-combustible and complies with highest fire safety rating (Euroclass A2-s1, d0)



Easy to process using ordinary machines and tools



High rigidity



Constant excellent colour quality and consistency thanks to first-class surface coating LUMIFLON™ (FEVE)



Trademark of AGC Chemicals,  
Asahi Glass Co., Ltd.



# DESIGN HAS NO LIMITS

ALPOLIC™ allows you to create original and innovative designs through its ease of use.










# THE POSSIBILITIES ARE ENDLESS

Light, rigid and incredibly flat, ALPOLIC™ maintains these characteristics while being easily formed into curves and shapes of your design.

Up to  
2m width!

## ALPOLIC™ A2

ALPOLIC™ A2 is an aluminium composite panel (ACM) consisting of two aluminium cover sheets with a **NON-COMBUSTIBLE** (UK: limited-combustible) high mineral-filled core (class A2-s1, d0). It can be supplied up to a width of 2m, which is unique worldwide. The outstanding colour coating with LUMIFLON™, based on a fluoropolymer resin (FEVE), ensures brilliant colours and protects against weather influences and corrosion. ALPOLIC™ A2 convince through light weight, excellent flatness, high rigidity, simple processing and formability. It is ideal for rainscreen cladding of rear-ventilated façades in existing and new buildings as well as for interior applications.

ALPOLIC™ product reference	Examination after... / Classification				General	Appx. Portion of combustible ingredients within the core material	Heat potential of the core material
	EU	DE	UK	FR			
A2	EN 13501-1 A2-s1, d0	DIN 4102-1 A2	BS 8414-1 BR 135 classified	M0	"Non-combustible" "Limited-combustible (UK)"	< 10% 	< 3 MJ/kg



Four different  
custom colours



ME009 Prismatic Gray  
(G80)

Gürallar Lapis Han, İstanbul, Turkey



Marriot Hotel Project, Istanbul, Turkey



90%




ALPOLIC™ A2 consists of approx. 90%  
of non-combustible ingredients within  
the core material.



# ALPOLIC™/fr

ALPOLIC™/fr is an aluminium composite panel (ACM) consisting of two aluminium cover sheets with a FLAME-RETARDANT mineral-filled core (class B-s1, d0). The outstanding colour coating with LUMIFLON™, based on a fluoropolymer resin (FEVE), ensures brilliant colours and protects against weather influences and corrosion. With continous coil-coating process, it provides a consistent and smooth finish. Compared to solid aluminium panels, ALPOLIC™/fr is light weight, rigid, flat and easy to form and process. It is therefore an ideal material for almost unlimited design possibilities for cladding of rear-ventilated façades or interior applications.

ALPOLIC™ product reference	Examination after... / Classification				General	Appx. Portion of combustible ingredients within the core material	Heat potential of the core material
	EU	DE	UK	FR			
FR	EN 13501-1 B-s1, d0	DIN 4102-1 B1	BS 8414-1 BR 135 classified	M1	"Flame-retardant"	< 30% 	< 15 MJ/kg



Custom Sparkling Colour (G15)



M9010 White (G30)



EYE Filmmuseum, Amsterdam, The Netherlands



Residential house, Barcelona, Spain

70%



ALPOLIC™/fr consists of approx. 70% of non-combustible ingredients within the core material.



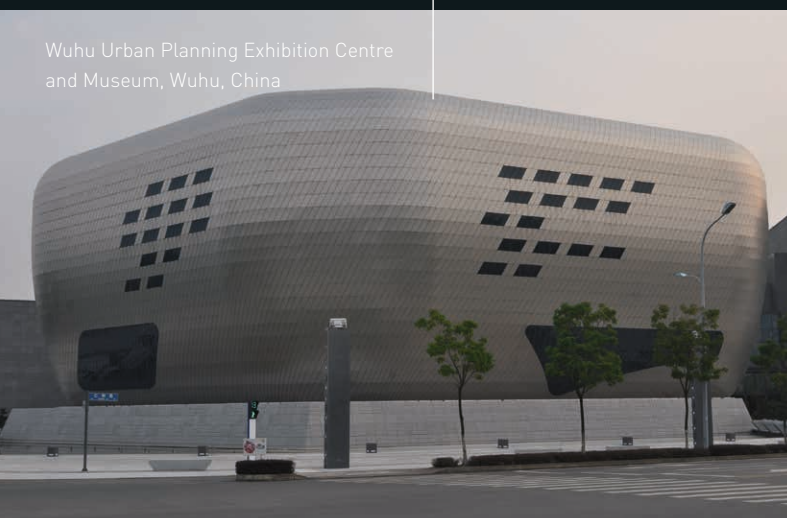
# ALPOLIC™/fr TCM

ALPOLIC™/fr TCM is a TITANIUM composite panel composed of a 0.3mm thick titanium sheet on the topside, a flame-retardant core and a 0.3mm thick stainless steel sheet on the reverse side. Titanium metal quickly forms a stable oxide film (called 'passivated film') at room temperature and is known for its unparalleled corrosion resistance. ALPOLIC™/fr TCM is suited to the external claddings and roof coverings of buildings located in highly corrosive environments.



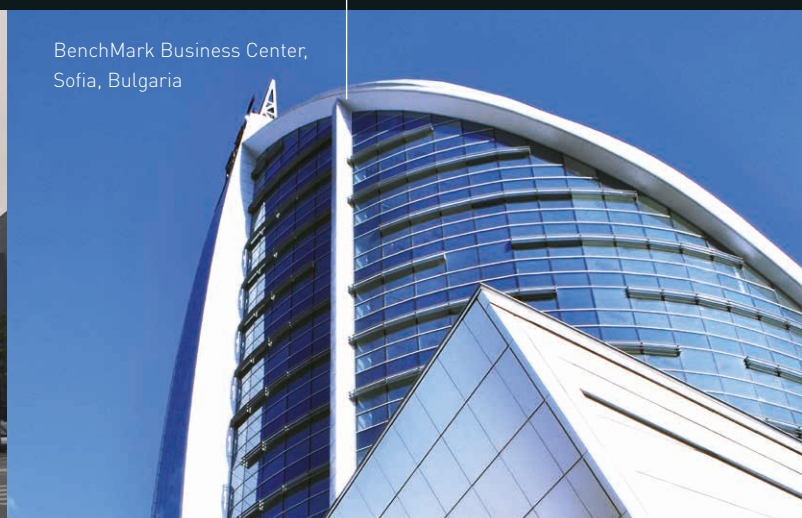
Natural Titanium  
Finish

Wuhu Urban Planning Exhibition Centre  
and Museum, Wuhu, China



Natural Titanium  
Finish

BenchMark Business Center,  
Sofia, Bulgaria



99,5%

Titanium, the top surface metal skin of  
ALPOLIC™/fr TCM, contains approx.  
99.5% of pure titanium.



# ALPOLIC™/fr SCM

ALPOLIC™/fr SCM is a STAINLESS STEEL composite panel composed of two sheets of 0.3mm thick stainless steel and a flame-retardant core. Both sides of the panel are NSSC220M, a highly rust-resistant ferritic stainless steel, which has an outstanding rust resistance comparable to stainless steel 316. ALPOLIC™/fr SCM is suitable for the external claddings and roof coverings of buildings.



Natural Stainless Steel  
Dull Finish



Natural Stainless Steel  
Hair Line Finish

Caja Vital Kutxa, Vitria, Spain



RAI, Amsterdam,  
The Netherlands



46%

4mm thick ALPOLIC™/fr SCM is equivalent to 2.9mm thick solid stainless steel in terms of bending rigidity but ALPOLIC™/fr SCM is lighter, about 46% of the solid stainless steel weight.



# ALPOLIC™/fr CCM

ALPOLIC™/fr CCM is a COPPER composite panel composed of a copper sheet on the topside, a flame-retardant core and a copper sheet on the reverse side. Like solid copper, ALPOLIC™/fr CCM is perfect for architectural wall cladding applications and accent trim on buildings.



Natural Copper  
Finish



Natural Copper  
Finish



University of New Mexico-New Science  
Building, Albuquerque NM, USA



Ceridian Corporation Headquarters  
Bloomington MN, USA

## Features

Natural copper's ever-changing surface finish constantly evolves, adding richness and depth to any building's façade. ALPOLIC™/fr CCM offers the rigidity of heavy gauge sheet metal in a lightweight copper-faced composite material. ALPOLIC™/fr CCM also features such attributes as exceptional flatness, vibration dampening, durability and ease of maintenance.

# ALPOLIC™/fr ZCM

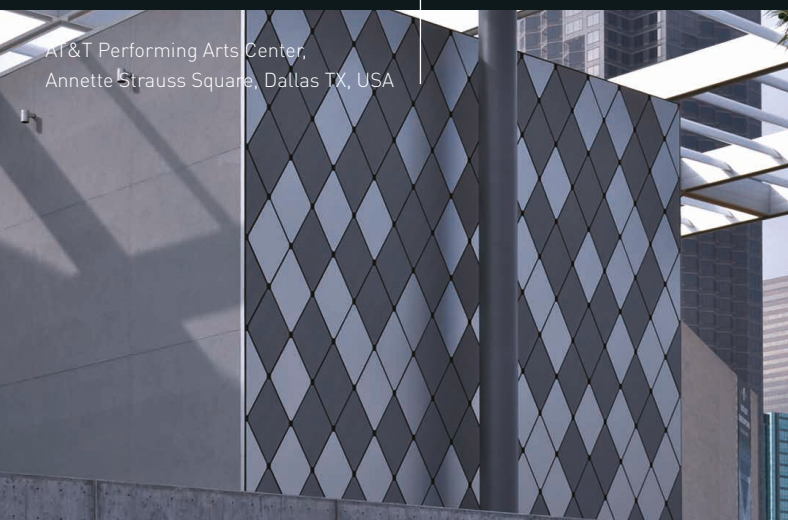
ALPOLIC™/fr ZCM is a ZINC composite panel composed of a chemically-weathered zinc sheet on the topside, a flame-retardant core and a zinc sheet on the reverse side. ALPOLIC™/fr ZCM is suited to exterior applications such as soffits, awnings, parapets, rain screens, external claddings and roofs, especially where conventional building materials fall short.



Quartz Zinc Colour and  
Natural Zinc Finish



Natural Zinc Finish



AT&T Performing Arts Center,  
Annette Strauss Square, Dallas TX, USA



University of Western Australia,  
Perth, Australia

## Features

The topside skin is a real zinc alloy weathered with a chemical conversion process, which later takes on a distinctive gray appearance through natural weathering. Protected by the surface layers, zinc alloy has a long life. The annual erosion rate is normally 1 to 7 microns (3 microns on average), which indicates that 100 microns (0.1mm) thick zinc takes as long as 35 years to erode.



# ALPOLIC™ ALL OVER THE WORLD

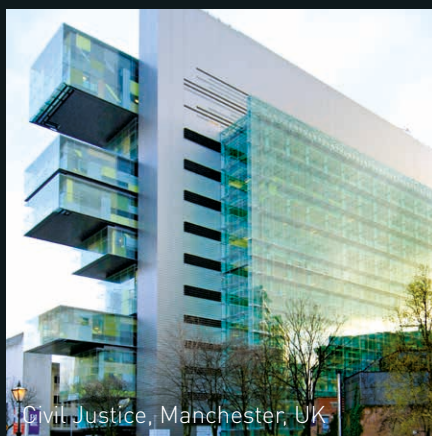
Maranello Village,  
Italy



Office building, Servograd, Serbia



City Green Court, Prague,  
Czech Republic



Civil Justice, Manchester, UK

Mercator Shopping Center, Ljubljana, Slovenia



OZ Retail & Shopping Mall, Krasnodar, Russia



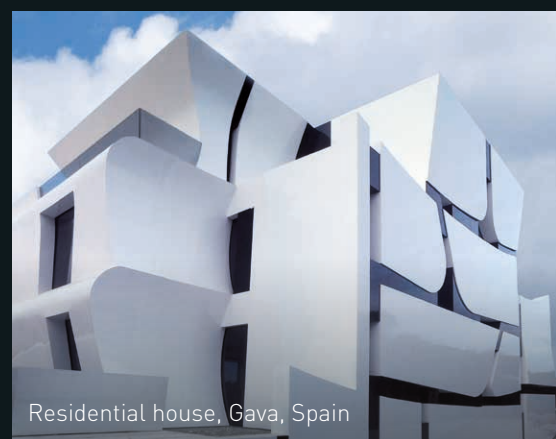




Mosae Forum, Maastricht, The Netherlands



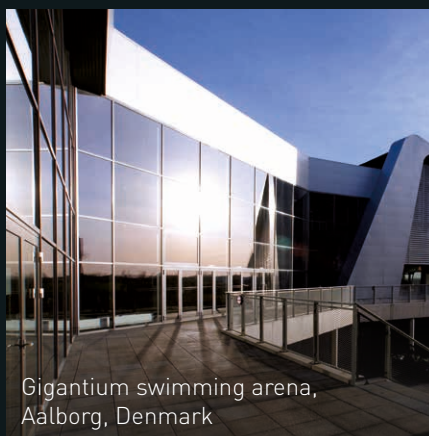
Medpark International Hospital,  
Chisinau, Moldova



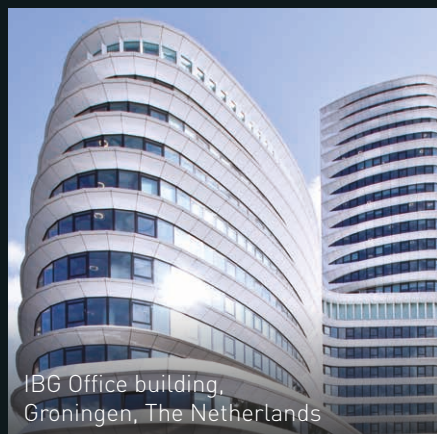
Residential house, Gava, Spain



Student house, Slovenia



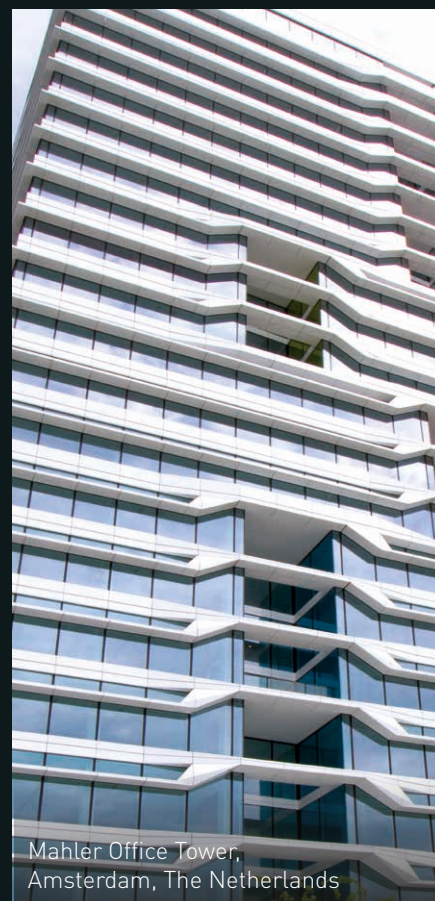
Gigantium swimming arena,  
Aalborg, Denmark



IBG Office building,  
Groningen, The Netherlands



Pablo Serrano Museum,  
Zaragoza, Spain



Mahler Office Tower,  
Amsterdam, The Netherlands



## ALPOLIC™ International:

### **mitsubishi chemical corporation**

ALPOLIC Department

1-1-1, Marunouchi, Chiyoda-ku, Tokyo 100-8251, Japan

phone: +81 3 6748-7348

fax: +81 3 3286-1307

mpi-ho-info@alpolic.jp

### **mitsubishi chemical euro asia ltd.**

Bağlarbaşı Kisikli Cad., No: 4, Sarkuysan-AK İş Merkezi, S-Blok,  
Teras Kat, Altunizade, Üsküdar, 34664 Istanbul, Turkey

phone: +90 216 651-8670/71/72

fax: +90 216 651-8673

info@alpolic.com.tr

### **mitsubishi chemical asia pacific pte ltd.**

Sales & Marketing Department

Mapletree Anson, 60 Anson Road, #10-01, Singapore 079914

phone: +65 6226-1597

fax: +65 6221-3373

mpap-sg-info@alpolic.sg

### **mitsubishi chemical composites america, inc.**

ALPOLIC Division

401 Volvo Parkway, Chesapeake, VA 23320, USA

phone USA: 800 422 7270

phone international: +1 757 382 5750

fax: +1 757 436 1896

info@alpolic.com

## ALPOLIC

MITSUBISHI POLYESTER FILM GmbH

Kasteler Straße 45/E512

65203 Wiesbaden, Germany

phone: +49 611 962-3482

fax: +49 611 962-9059

info@alpolic.eu

www.alpolic.eu



**Quality  
made in  
Germany**



### **Recycling**

Our materials are almost 100% recyclable. Even waste from ALPOLIC™ plants is collected and recycled.




ISO 9001:2015  
ISO 50001:2011  
ISO 14001:2015  
www.tuv.com  
ID: 110420746



**Trademark of AGC Chemicals,  
Asahi Glass Co., Ltd.**

### **Liability/Copyright**

Despite the greatest possible control of the content, Mitsubishi Chemical Corporation does not assume any liability for the completeness and correctness of the content. Technical changes and errors to change without notice. ©2019 Mitsubishi Chemical Corporation. ALPOLIC™ is a trademark of Mitsubishi Chemical Corporation.

A Group Company of  
 **MITSUBISHI CHEMICAL**