

ALPOLIC™

Aluminium composite panels

Small Quantity Offer –

also for ALPOLIC™ A2!



ALUMINIUM COMPOSITE PANELS: ALREADY AVAILABLE FROM 150 M²!

ALPOLIC™ aluminium composite panels consisting of two 0.5 mm thick aluminium cover sheets refined with high-quality lacquers with a mineral polymer core. They are characterised by easy processing, formability, excellent flatness, bending stiffness and weather resistance. In addition, they are impact and break resistant and very durable. The ideal material for sophisticated façade design for both existing and new buildings.

We supply our standard colour range with 14 classic colours from a **small quantity of only 150 m²**. This means maximum flexibility and a reduction in storage costs.

Product variants:

ALPOLIC™/fr:
Aluminium composite panel with a flame-retardant mineral polymer core (EN 13501-1, Class B-s1, d0).
Width: 1,285 oder 1,535mm

ALPOLIC™ A2:
Aluminium composite panel with a non-combustible (UK: limited-combustible) mineral polymer core (EN 13501-1, Class A2-s1, d0).
Width: 1,250 oder 1,500mm

ALPOLIC™ ELEGANT / CLASSIC COLOURS



Pure White
DE-MA9100-G30
(± RAL 9010)



Cream White
DE-MA9102-G30
(± RAL 9001)



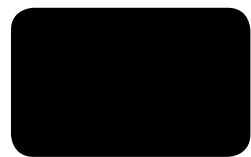
Charcoal
DE-MA7991-G30



Light Gray
DE-MA7104-G30
(± RAL 7035)



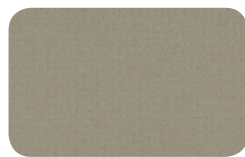
Anthracite Gray
DE-MA7105-G30
(± RAL 7016)



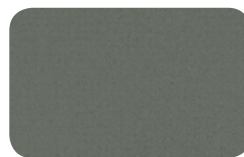
Ink Black
DE-MA9326-G30
(± RAL 9005)



Champagne Silver
DE-MD9503-G30



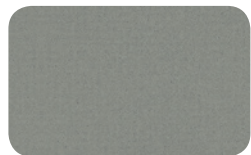
Bronze Metallic
DE-MD9504-G30



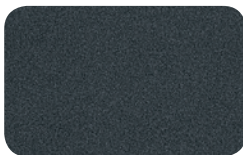
Gray Metallic
DE-MD7502-G30



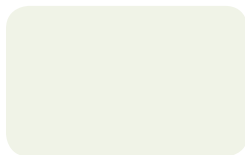
Sunrise Silver
DE-MD9600-G30
(± RAL 9006)



Smoke Silver
DE-MD9501-G30
(± RAL 9007)



Deep Gray Metallic
DE-MD7505-G30



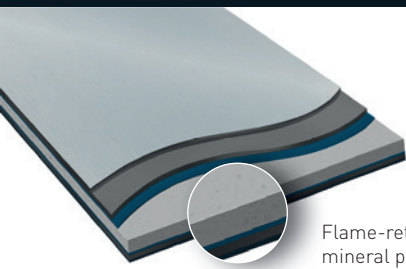
Traffic White
DE-MA9101-G30
(± RAL 9016)



Anodic Silver
DE-MD9500-G30
(± RAL 9006)

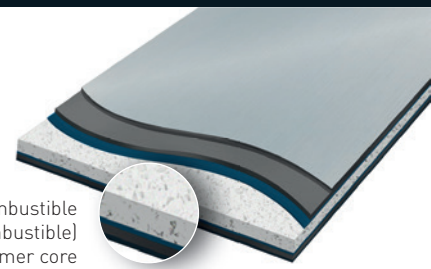
Hint:

- The representation of the colours corresponds to the printing possibilities. We recommend an exact colour matching based on an original colour sample. You are welcome to request colour samples from us.
- Due to the production process, slight colour deviations may occur with colours from different production batches. We therefore recommend that you order the total quantity for a project in one order.



Flame-retardant mineral polymer core

TECHNICAL DATA



Non-combustible (UK: limited-combustible) mineral polymer core

ALPOLIC™/fr

Small quantity/single cut length: 150 m²

Features	Standard	Unit	Value
Total thickness	-	mm	4
Cover sheet thickness	-	mm	0.5
Core thickness	-	mm	3
Width	-	mm	1,285/1,535
Length	-	mm	Up to max. 7,300
Weight	-	kg/m ²	7.6
Surface/Coating			
Coil-Coating	-	-	LUMIFLON™-based fluoropolymer coating
Gloss (Gardner scale)	ASTM D523	%	30

Fire classification	
B-s1, d0 – flame-retardant	

Terms of delivery	Price
Approx 4–6 weeks	On request

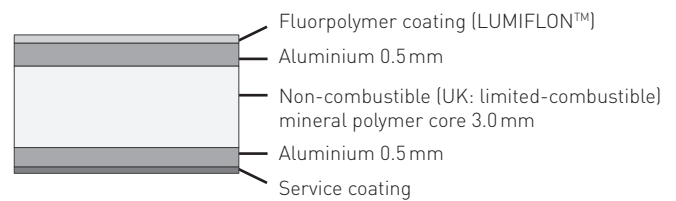
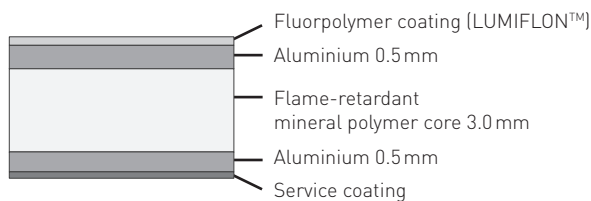
ALPOLIC™ A2

Small quantity/single cut length: 150 m²

Features	Standard	Unit	Value
Total thickness	-	mm	4
Cover sheet thickness	-	mm	0.5
Core thickness	-	mm	3
Width	-	mm	1,250/1,500
Length	-	mm	Up to max. 7,300
Weight	-	kg/m ²	8.4
Surface/Coating			
Coil-Coating	-	-	LUMIFLON™-based fluoropolymer coating
Gloss (Gardner scale)	ASTM D523	%	30

Fire classification	
A2-s1, d0 – non-combustible (UK: limited-combustible)	

Terms of delivery	Price
Approx 4–6 weeks	On request



ALPOLIC™ – the world's first address for aluminium composite panels

ALPOLIC™ is a brand of Mitsubishi Chemicals Corporation. For more than 47 years, planners, architects, builders and processors worldwide have been relying on our high-quality products for the building façade. BE.SAFE. is the claim that ALPOLIC™ not only holds as a product, but holistically as a corporate philosophy. This is backed by tangible arguments for more quality and safety for the building façade – from fire protection to sustainability. **Find out more: www.alpolic.eu**



Quality made in Germany



Recycling

Unsere Materialien sind zu fast 100 % recyclingfähig. Auch die aus ALPOLIC™-Anlagen gewonnenen Abfälle werden gesammelt und recycelt.



Trademark of AGC Chemicals, Asahi Glass Co., Ltd.

Liability/Copyright: Despite the greatest possible control of the content, Mitsubishi Chemical Corporation does not assume any liability for the completeness and correctness of the content. Technical changes and errors to change without notice. ©2019 Mitsubishi Chemical Corporation. ALPOLIC™ is a trademark of Mitsubishi Chemical Corporation.

ALPOLIC | MITSUBISHI POLYESTER FILM GmbH

Kasteler Straße 45/E512 | 65203 Wiesbaden, Germany | phone: +49 611 962-3482 | fax: +49 611 962-9059
 info@alpolic.eu | www.alpolic.eu

A Group Company of
MITSUBISHI CHEMICAL